


Elsewhere



**"IN THE CONFINES OF A
RELIGIOUS 1980S SUBURB,
TWO TEENAGE GIRLS CRAFT
A THEATRICAL REBELLION
AGAINST PATRIARCHAL
VIOLENCE. WHEN THEY
INVITE THEIR NEIGHBOR
CHARLIE TO THEIR SURREAL
BACKYARD PERFORMANCE,
THE GIRLS BLUR THE LINES
BETWEEN REALITY AND
PLAY, FORCING CHARLIE TO
CONFRONT HIS COMPLICITY
IN THEIR SUFFERING."**





Director's Statement – Elsewhere

Elsewhere came to life when my co-writer, Jules, and I met on a sunny fall afternoon in Brooklyn at Octavia Cafe in 2022. Over hot coffee, we pulled Tarot cards to guide our creative process, letting instinct shape the narrative we would soon embark on. We drew the *Nine of Cups*, the *Ace of Swords*, and the *Knight of Wands*—cards that would come to define and inspire the world of our film.

The *Nine of Cups* is an invitation to indulge in life's pleasures—good food, art, beauty, desire. From the beginning, we knew we wanted this story to center around two hedonistic girls, reveling in a world of their own making. The *Ace of Swords* speaks to moments of breakthrough, of truth cutting through illusion, of justice demanding its due. The *Knight of Wands* is a card of boldness, passion, and impulsive action. It represents someone who is driven by adventure and desire, often rushing forward without hesitation or concern for consequences.

With these themes in mind, *Elsewhere* began to take shape as a surreal, theatrical rebellion against the forces that seek to control and define us. The script underwent a two-year metamorphosis, evolving alongside us. Much of our choices were led by gut feelings and the art we consumed. A central plotline emerged after seeing *Saint Agatha* by Francesco Guarino at The Louvre. She has a juxtaposing expression—one eyebrow arched as she holds a cloth to her breasts, which were violently torn off. We realized her story of martyrdom perfectly aligned with our themes and wove it into the film. When we decided to explore parts from the book of Genesis in the play, the song *Genesis* by Grimes came on in the cafe where we were brainstorming. Much of our process felt deeply spiritual.

At its core, *Elsewhere* is about two girls using performance art to process and channel their inner fears, desires, and rage. What happens when language is no longer enough to express the deep pain someone has inflicted upon you? The girls create an uncanny world where they hold the power—where they're in control of their own narrative. As their aggressor sits in a trance-like state, unable to get up from his chair and face what he's done. Isn't that everyone's dream?

Stylistically, we embraced theatricality, using our theater backgrounds to lean into dream logic and artifice to craft a space that feels both constructed and deeply emotional. Our crew was a mix of working professionals and first-time filmmakers, further reinforcing the collaborative spirit of this project.

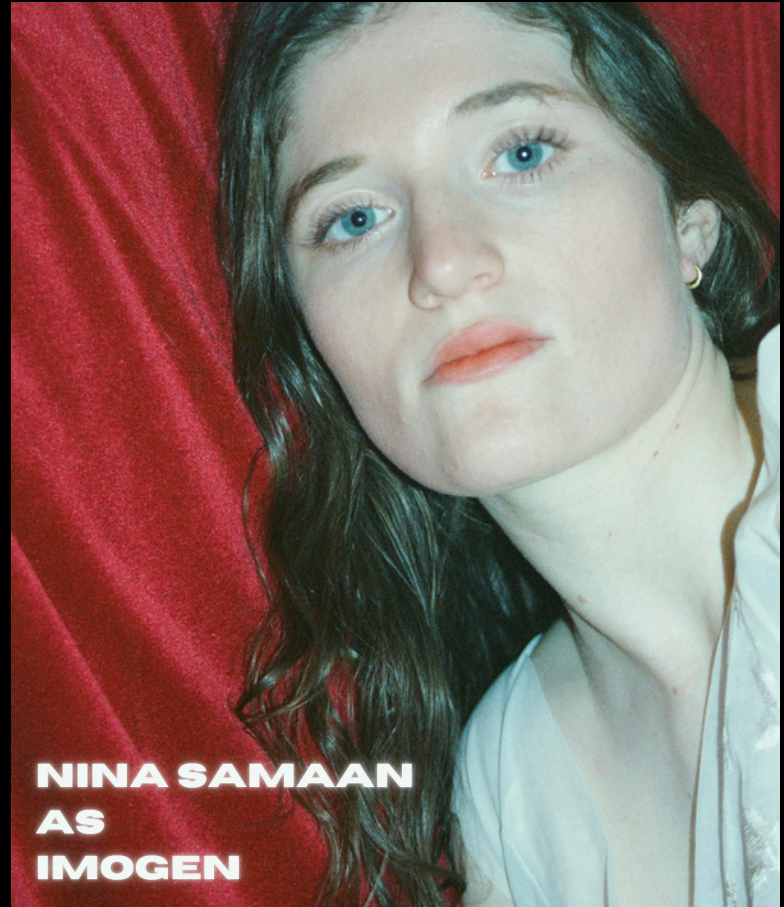
We hope *Elsewhere* lingers like a half-remembered dream—one that unsettles, provokes, and maybe even **inspires**.

PRINCIPAL

**JULIA
CORRIN
COFFEY AS
LULU**



**NINA SAMAN
AS
IMOGEN**



CAST



ABOUT THE FILM

ABOUT THE CAST

ABOUT THE CREW

ABOUT THE FILM

ABOUT THE CAST

ABOUT THE CREW

ABOUT THE FILM

ABOUT THE CAST

ABOUT THE CREW

ABOUT THE FILM

ABOUT THE CAST

ABOUT THE CREW

ABOUT THE FILM

ABOUT THE CAST

ABOUT THE CREW

EMMA CLAIRE CROCKETT - DIRECTOR/CO- WRITER

SARA DEMETREE - EXECUTIVE PRODUCER

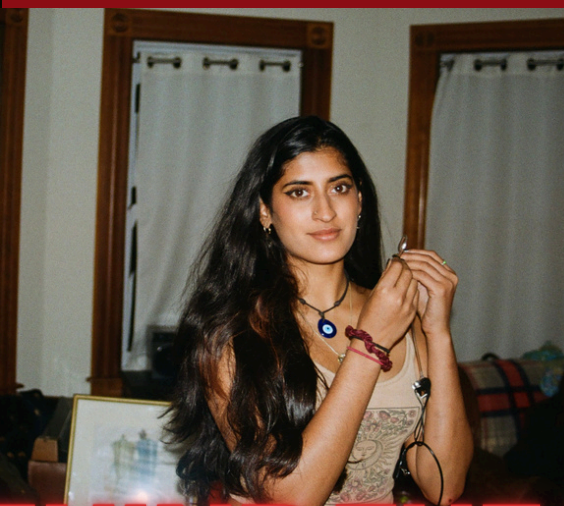
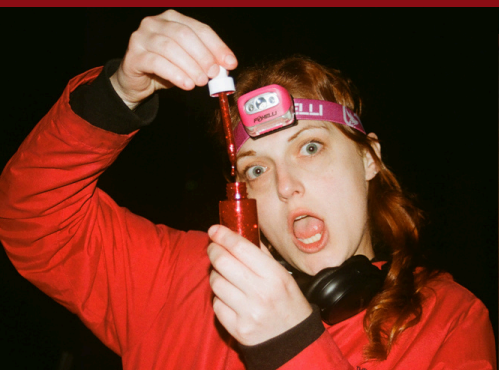
SARA IS AN ACTRESS, PRODUCER, AND WRITER BASED IN NEW YORK CITY. AS THE FOUNDER OF TOMATO TOMATO PICTURES (TTP), HER PRODUCTION COMPANY HAS BEEN AT THE FOREFRONT OF HER FULL-TIME CAREER. IN THE PAST YEAR, TTP PRODUCED A PILOT FOR A WEB SERIES IN COLLABORATION WITH "ELSEWHERE." SARA ALSO WORKED AS A PRODUCER ON "WILDCAT", A FEATURE FILM DIRECTED BY ETHAN HAWKE AND STARRING MAYA HAWKE. SARA IS A GRADUATE OF THE 2.5-YEAR CONSERVATORY PROGRAM AT ATLANTIC ACTING SCHOOL IN NEW YORK CITY AND ALSO HOLDS A DEGREE FROM FLORIDA STATE UNIVERSITY.

EMMA CLAIRE CROCKETT WAS BORN AND RAISED IN THE HUMID HEAT OF ALABAMA, TO A NURSE AND AN ENVIRONMENTAL SCIENTIST. A SELF-PROCLAIMED "CINEPHILE", SHE SPENT MUCH OF HER FREE TIME AT BLOCKBUSTER, SELECTING MOVIES FOR HER PORTABLE DVD PLAYER. IN 2020, SHE RELOCATED TO NEW YORK CITY TO STUDY ACTING AT THE ATLANTIC ACTING SCHOOL THERE, SHE DISCOVERED HER LOVE FOR WRITING AND FILMMAKING THROUGH IMPROV AND FILM CLASSES. AFTER GRADUATING IN 2022, SHE CO-FOUNDED THE PRODUCTION COMPANY TOMATO TOMATO PICTURES WITH SARA DEMETREE. EMMA IS INSPIRED BY EXAMINING HUMANKIND IN ALL ITS GORE AND GLORY.

ELSEWHERE: A PLACE FOR GIRLS LIKE YOU AND ME IS HER DIRECTORIAL DEBUT. SHE WOULD ALSO LIKE YOU TO KNOW SHE USES BOTH "EMMA CLAIRE" AND "EMMA" INTERCHANGEABLY, AND WILL RESPOND TO BOTH!

FILM SPECIFICATIONS

- **RUN TIME: 15 MINUTES**
- **GENRE: MAGICAL REALISM, HORROR, DRAMA**
- **SHOT IN 4K**
- **LANGUAGE: ENGLISH**
- **COMPLETION YEAR: 2025**
- **ASPECT RATIO: 16:9**
- **23.98 FPS**
- **UNITED STATES**



BEHIND THE SCENES



**WE WERE HONORED TO
RECEIVE THE PANAVISION
NEW FILMMAKERS
PRODUCTION GRANT FOR
THIS PROJECT, PROVIDING
US WITH ACCESS TO
PANAVISION'S TOP-OF-
THE-LINE CAMERAS AND
EQUIPMENT FOR OUR
SHOOT.**



SOCIAL MEDIAS

@TOMATOTOMATOPICTURES

@ELSEWHEREAPLACEFORGIRLS
ON INSTAGRAM

CONTACT US

TOMATOTOMATOPICTURES@
GMAIL.COM